

PM 322

Firbank

La Cybelline

Vault
MD
1796
F522

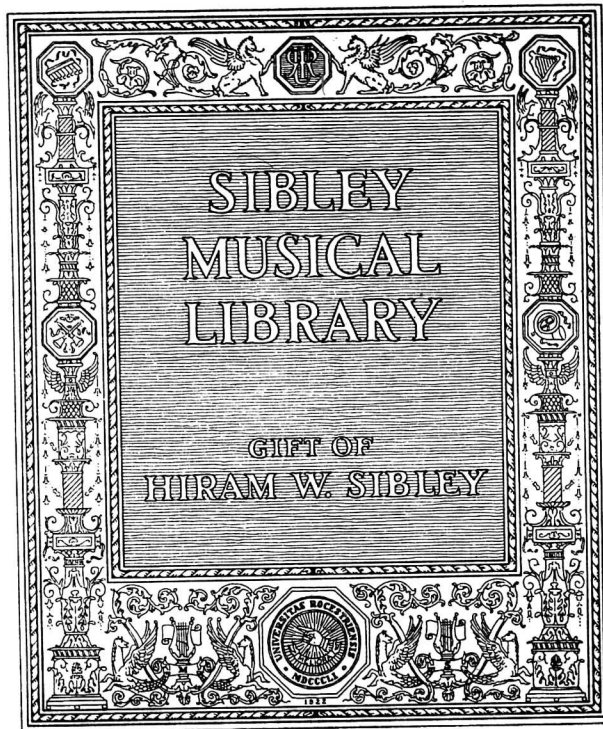
Firbank,
La Cybelline. A new dance for a girl.
The tune composed by M^r Firbank.
(London); Writt by M^r Pemberton,
(173-?). 5 l. 28cm.

Bd. with his: M^r Caverley's slow
minuet.



MD
1796
F522

Furbank



M 356

354

MR. CAVERLEY'S

Slow

Minuet.

A New Dance for a Girl.

The Tune Composed by

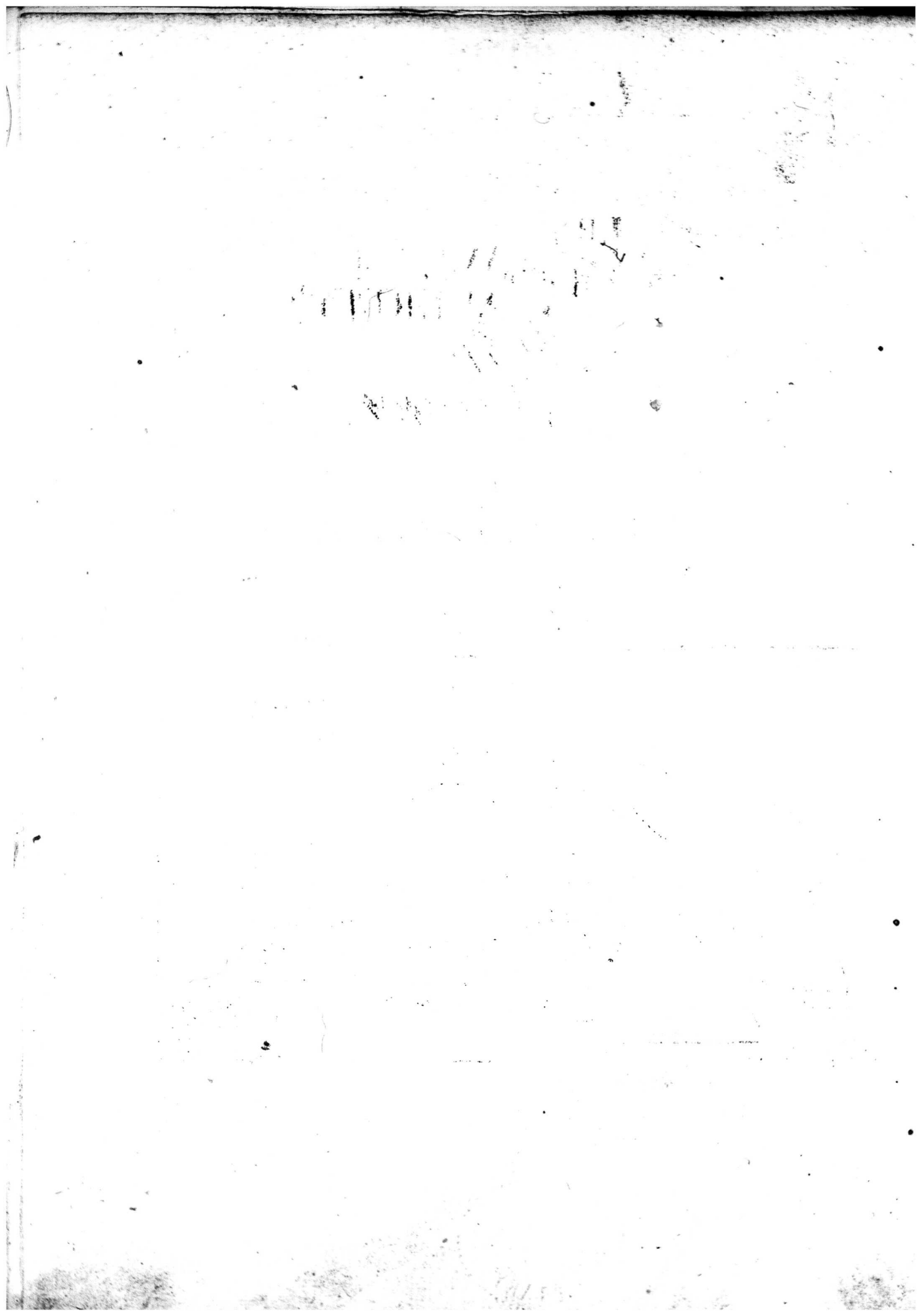
M^r Furbank

Writt by

M^r Pemberton.

*And sold by Him, at the Iron Rails,
the lower End of Oxindon-Street near y^e.*

HAY MARKET



Slow Minuet.

1010101-1010101-1010101

This image shows a handwritten musical score on a single page. The score is divided into two systems of staves. The first system consists of two staves, both in treble clef with a key signature of two sharps (F# and C#). The second system also consists of two staves, with the top staff in treble clef and the bottom staff in bass clef. A large number '2' is written above the second staff of the second system. Below the staves is a large, complex diagram or score. It features several horizontal lines with musical notation, including notes, stems, and beams. The diagram is highly irregular and appears to be a detailed or perhaps over-elaborated musical sketch, possibly representing a specific instrument's technique or a complex rhythmic pattern. The entire page is enclosed in a hand-drawn rectangular border.

Handwritten musical notation on two staves. The top staff begins with a treble clef, a key signature of two sharps (F# and C#), and a 3/4 time signature. A measure number '3' is written above the staff. The notation consists of eighth and sixteenth notes. The bottom staff also begins with a treble clef and a key signature of two sharps, and contains similar rhythmic notation.

A large, intricate diagram enclosed in a rectangular border. The diagram features a central vertical axis with a horizontal line intersecting it. The notation is highly decorative and abstract, with many overlapping lines, loops, and curves. It resembles a complex musical score or a diagrammatic representation of a musical structure. The lines are drawn with varying thicknesses and include many small tick marks and dots. The overall appearance is that of a highly detailed and possibly experimental musical notation system.

4

Finis

PM 322

Firbank

La Cybelline

Vault
MD
1796
F522

Firbank,
La Cybelline. A new dance for a girl.
The tune composed by M^r Firbank.
[London]; Writt by M^r Pemberton,
[173-?]. 5 l. 28cm.

Bd. with his: M^r Caverley's slow
minuet.

LA
Gybelline,

A New Dance for a Girl.

The Tune Composed by

M^r Firtbank

Writt by

M^s Lemberton.

And sold by Him, at the Iron Rails,
the lower End of Oxindon-Street near y^e.

HAY MARKET

Three staves of musical notation, likely representing a vocal line and two instrumental accompaniment parts. The notation includes various note values, rests, and dynamic markings.

La

Cybilline

A large, circular musical diagram. The outer boundary is a continuous, flowing line of musical notation. Inside this circle, there is a central structure consisting of several vertical and horizontal lines, also filled with musical notation. The overall appearance is that of a complex, possibly sacred or ceremonial, musical score.

Two staves of musical notation. The top staff begins with a treble clef, a key signature of one sharp (F#), and a common time signature (C). The notation consists of eighth and sixteenth notes with stems. A large number '2' is positioned to the right of the second staff.

A large, stylized musical graphic that forms the shape of a capital letter 'C'. The letter is filled with intricate musical notation, including notes, stems, and clefs, arranged in a circular pattern.

Three staves of musical notation. The first staff is in G major (one sharp) and C major (no sharps or flats). The second staff is in G major. The third staff is in G major. The notation includes various rhythmic values and melodic lines.

3

A large, intricate musical diagram or score. It features a large, circular shape formed by a continuous line of musical notation, possibly representing a single melodic line or a complex rhythmic pattern. The notation is highly decorative and includes many notes, rests, and other musical symbols. The overall appearance is that of a complex, possibly experimental or theoretical, musical composition.

4

FINIS

